



# The Human Face of Big Data





# DATA: REVEALING INVISIBLE WORLDS



# Genome Analysis

SEARCH PROTEINS CHROMOSOMES PROJECTS FAQ LINKS NEWS

Advanced Search Reset

IN DETAILS

Sequence Coverage Protease Map Expression Peptides/MSMS Reference Peptides Projects

## Form 8 of Titin

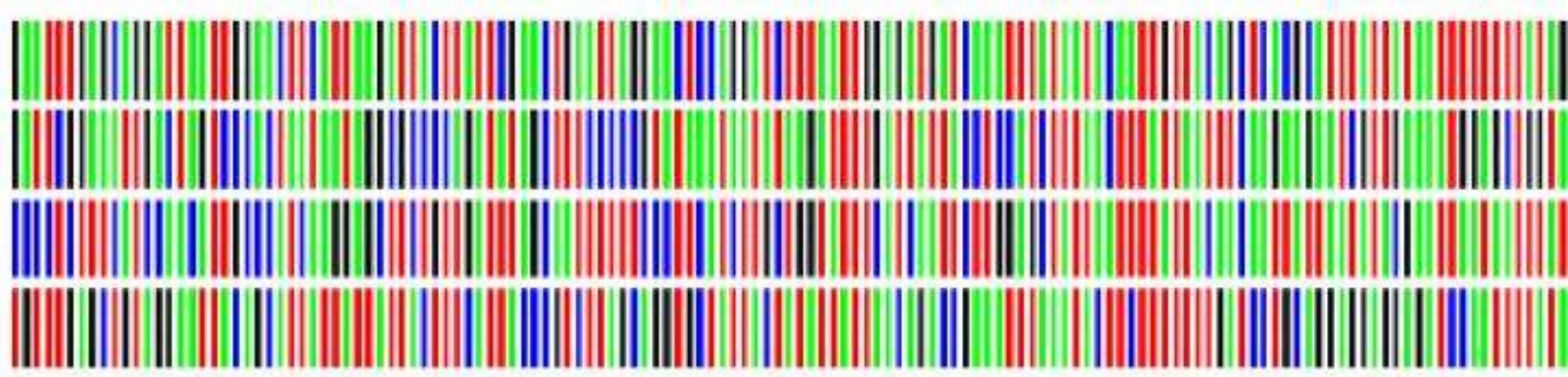
Location: Chromosome 2: 179390716 - 179695529 reverse strand  
Gene/Transcript: ENSG00000155657/ENST00000359218  
Name: TTN  
Accession: Q8WZ42-8/TITIN\_HUMAN  
Organism: Homo sapiens (human)  
Type: protein

Sequence Coverage:	44%
Unique Peptides:	7400
Spectra:	16184
Unique Peptides on Protein Level:	0
Spectra:	0
Shared Peptides:	94
Spectra:	195
Number of Projects:	24
Number of Experiments:	85

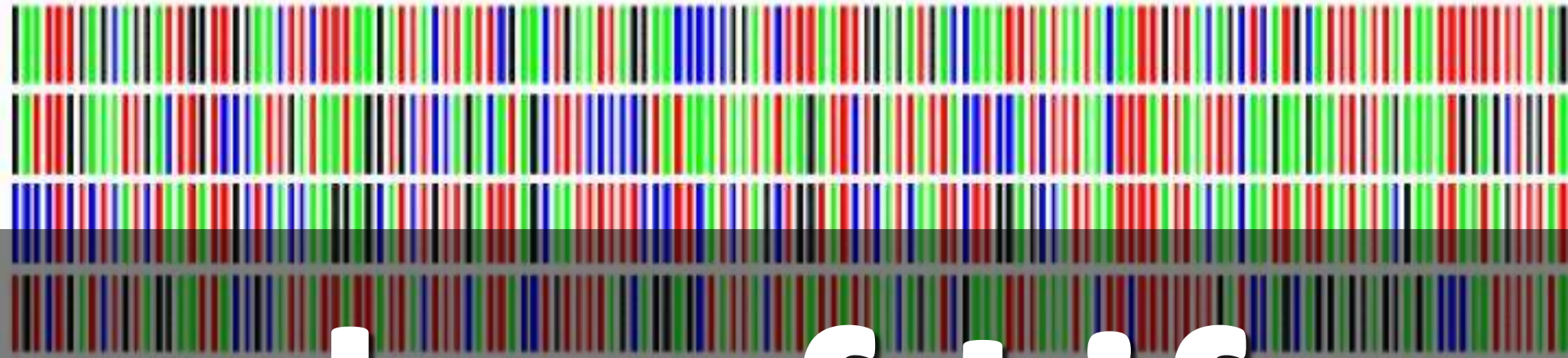
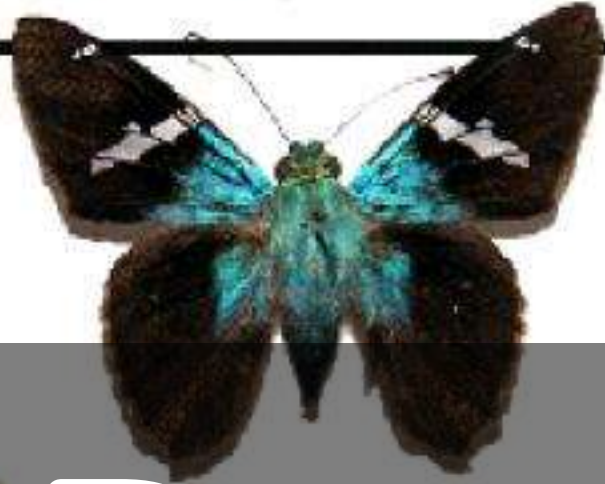
Sequence Coverage and Domains:

Cellular Localization:  
Plasma membrane:

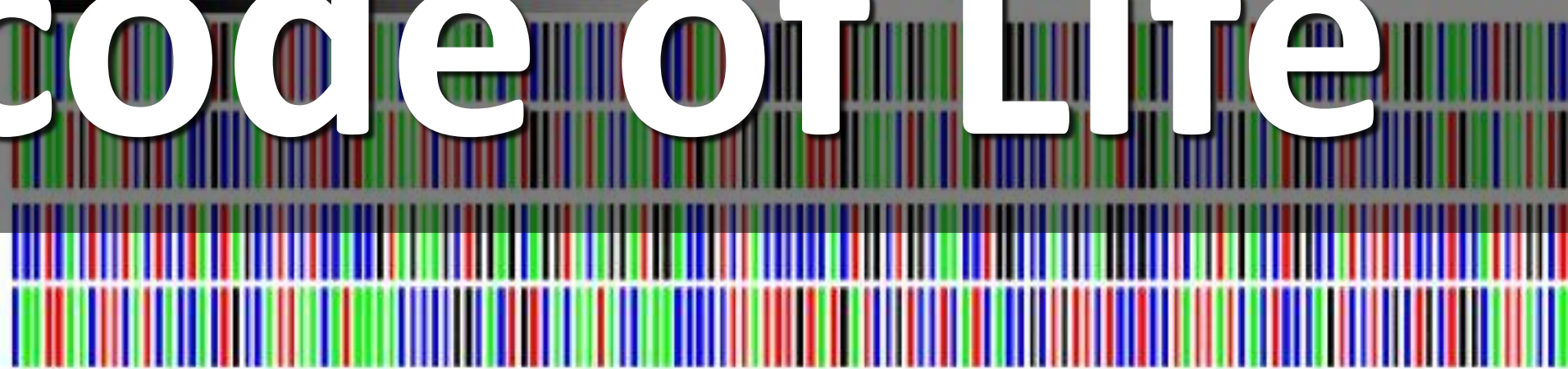




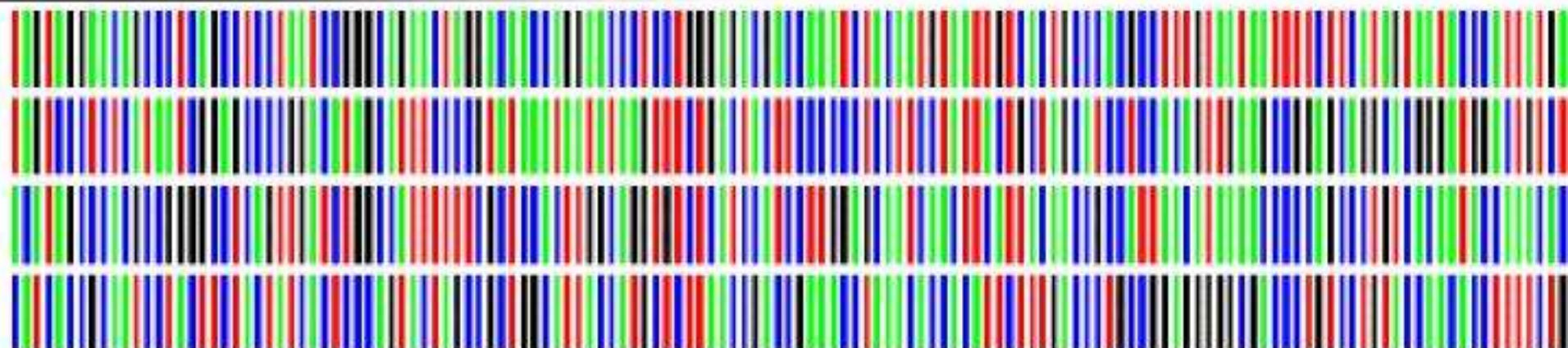
*Astraptes fulgerator* CELT



*Astraptes fulgerator* RIGO



*Bubo virginianus*



*Tyto alba*

# Barcode of Life



# Creating a Searchable Index of Every Species on Earth



DEOXYRIBONUCLEIC ACID



How can your Car improve your  
Golf Game?

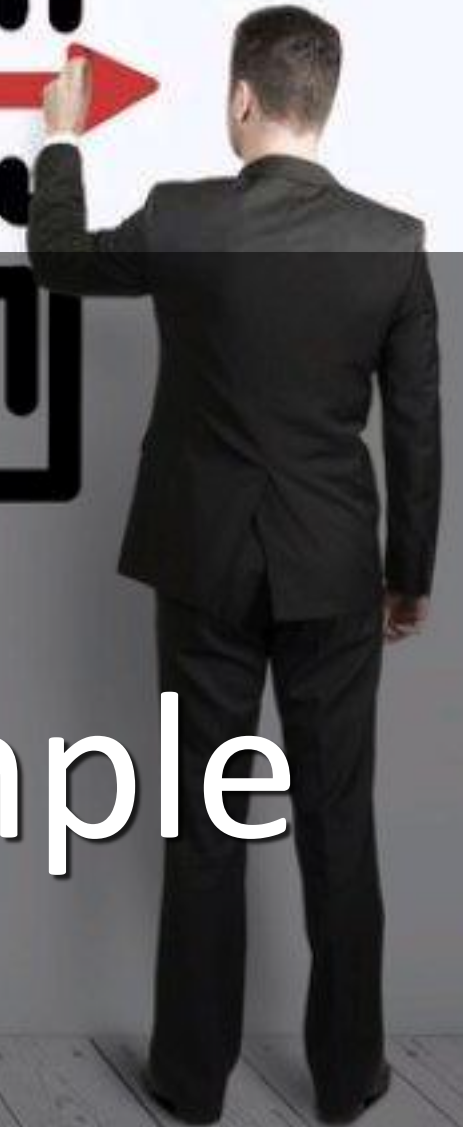
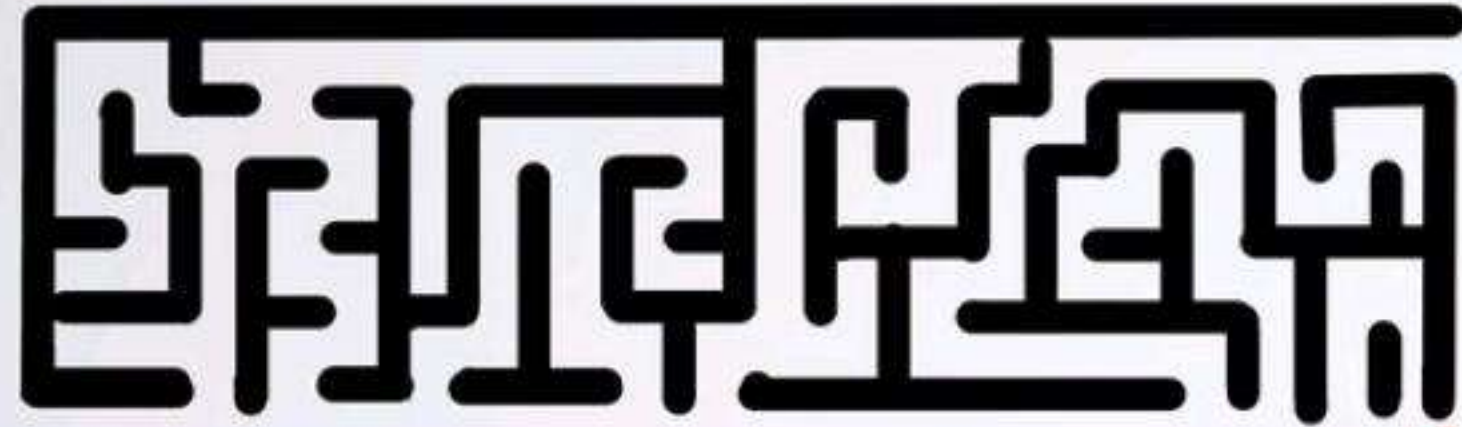


# Smart Cities



Changing the World one City at a Time





Making Complex Simple